

F CHIP VALVE



1 CHIP VALVE

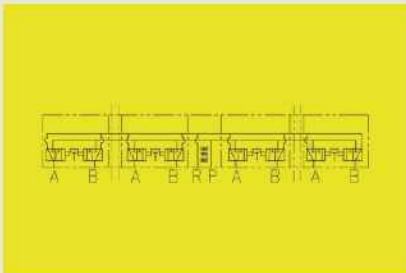
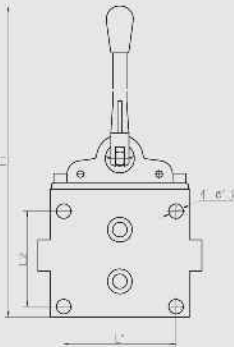
Product Description

Be used for the control of mining hydraulic frame system. Control the liquid flow in, flow out from the oil cylinder to fulfill the extend-stretch of oil cylinder. It matches with corresponding flow based on cylinder diameter and action speed. This valve is developed after optimizing the traditional chip valve, so it is with compact structure, small volume, small pressure loss, inserted valve core, long lifespan and easy to maintenance.

Technical parameters:

Nominal pressure:	31.5MPa
Nominal flow:	80L/min、125L/min
Material:	Stainless material
Working media:	Emulsion meeting MT 76-2002 standards
Interface:	DN or KJ series

Safety standard model	Nominal flow L/min80	L1	L2	H	Thickness	Common model
FHS80/31.5Z	80	100	85	300	42	ZC
FHS125/31.5Z	125	100	85	300	43	ZCFD
FHS125/31.5Z	125	100	85	300	43	GZC



2 CHIP VALVE

Product Description

Be used for the control of mining hydraulic frame system. Control the liquid flow in, flow out from the oil cylinder to fulfill the extend-stretch of oil cylinder. It matches with corresponding flow based on cylinder diameter and action speed. This valve is developed after optimizing the traditional chip valve, so it is with compact structure, small volume, small pressure loss, inserted valve core, long lifespan and easy to maintenance.

Technical parameters:

Nominal pressure:	31.5MPa
Nominal flow:	125L/min、200L/min 320L/min、400L/min
Material:	Stainless material
Working media:	Emulsion meeting MT 76-2002 standards
Interface:	DN or KJ series

Safety standard model	Nominal flow L/min	L1	L2	H	Thickness	Common model
FHS125/31.5Z	125	95	80	309	43	NCF
FHS200/31.5Z	200	95	80	336	43	BZF
FHS320/31.5Z	320	104	82	410	46	DHC
FHS400/31.5Z	400	104	75	369	46	WHF
FHS400/31.5Z	400	108	88	394	50	FHS400/31.5CZ

