



1

MANUAL BACKWASH
FILTER



2

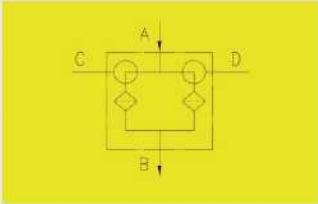
CARTRIDGE
FILTER

Product Description

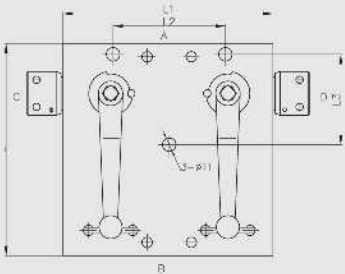
Used for mining down hole large flow hydraulic frame; as the filter used in main intake path of frame hydraulic liquid, protecting frame valve. This filter is with small pressure loss and multi-time backwashing features, it is the necessary accessory for manual pilot valve or electro-hydraulic control frame. This filter can guarantee emulsion quality, greatly reduce the faulty rate of hydraulic system and lengthen the lifespan of hydraulic equipment, especially consumable spare parts.

Technical parameters:

Material:	Stainless material
Nominal pressure:	31.5MPa
Nominal flow:	400、800L/min
Filtration accuracy:	25 μ m, 40 μ m;
Working media:	Emulsion meeting MT 76-2002 standard
Interface:	Inlet: DN 25, outlet: DN 25
	Backwash port: DN 12.5
	can be customized.



Safety standard model	L	L1	L2	L3	A、B	C、D	Thickness	Nominal flow L/min
GLQ400/31.5	174	172	92	74	DN25	DN12.5	54	400
FCGLQDN25	233	174	117	148	DN25	DN12.5	62	800



Product Description

Be mainly installed in the hydraulic frame high pressure rubber pipe control circuit of mining down hole, filter the impurities of working media to prevent the dirty ingress into the bracket pipe during disassembly of main circuits, as well as protect valves of hydraulic frame.

Safety standard model	A	B	L
JZGL.00	KJ10	KJ10	119
BG2.00	KJ13	KJ13	119
BG5(16)	KJ16	KJ16	130
BG8.00	KJ19	KJ19	186
GLQ16.00	KJ16	KJ16	143
GLQ19.00	KJ19	KJ19	145
GLQ25.00	KJ25	KJ25	140
GLQ13A	KJ13	KJ13	148
GLQ16A	KJ16	KJ16	164
GLQ19A	KJ19	KJ19	164
GLQB16.00	DN16	DN16	143
GLQB25G-M	DN25	DN25	143
GLQB19.00	DN19	DN19	143



D FILTRATION SYSTEM



3

PILOT BACKWASH FILTER



4

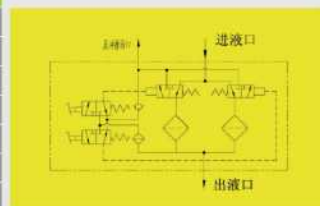
AUTOMATIC BACKWASH FILTER

Product Description

Used for mining down hole large flow hydraulic frame; as the filter used in main intake path of frame hydraulic liquid, protecting frame valve. This valve is with pilot handle operation backwash mode, small pressure loss and multi-time backwashing features, it is the necessary accessory for manual pilot valve or electro-hydraulic control frame. This filter can guarantee emulsion quality, greatly reduce the faulty rate of hydraulic system and lengthen the lifespan of hydraulic equipment, especially consumable spare parts.

Technical parameters:

Product code:	VALGLQX 1000/31.5/25
Nominal flow:	1000L/min
Working pressure:	31.5MPa
Filtration accuracy:	25 μ m, 40 μ m
Liquid inlet:	DN 25 rapid interface, can be customized.
Liquid outlet:	DN 25 rapid interface, can be customized.
Backwash port:	DN 12.5 rapid interface

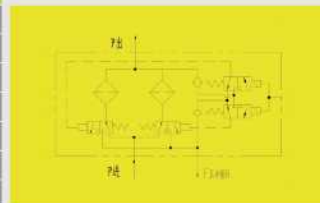


Product Description

Be mainly used for the filtration of intake emulsion of mining down hole hydraulic frame, protect the frame hydraulic system, especially the electro-hydraulic reversing valve. After flowing out from the pump station, filtered by high pressure filter station, the emulsion entered into the liquid pipe through very long crossheading, and be distributed to each hydraulic frame of mining face. During this process, this filter will filtrate out the pollutants produced or entrained, so as to protect the electro liquid control valve and frame hydraulic system from pollution. This filter is with reliable high, low pressure sealing, large flow, high accuracy, long lifespan, the filtration core can be backwashed for multi times, it is the composition element of down hole hydraulic frame system.

Technical parameters:

Product code:	VALGLQD 1000/31.5/25
Nominal flow:	1000L/min
Working pressure:	31.5MPa
Filtration accuracy:	25 μ m, 40 μ m
Liquid inlet:	DN 25 rapid interface, can be customized.
Liquid outlet:	DN 25 rapid interface, can be customized.
Backwash port:	DN 12.5 rapid interface
Rated voltage:	12VDC
Working current:	120/50mA
Static working protection class:	Ip68
Explosion-proof class:	Ex ib I Mb





FILTRATION SYSTEM



5

MANUAL BACKWASH FILTER STATION



6

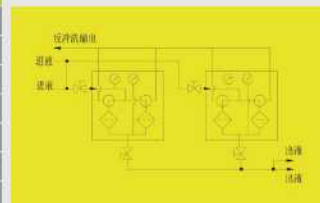
AUTOMATIC BACKWASH FILTER STATION

Product Description

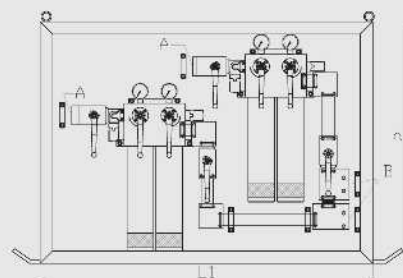
This product is mainly used for filtering the emulsion of mining frame, with reliable high, low pressure sealing, large flow, high accuracy, long lifespan, the filtration core can be backwashed for multi times. After being filtered by the back wash filtration station, the emulsion station provides high pressure emulsion for mining face frame. It is suited for the fully mechanized mining face hydraulic frame of million or plus tons, and it is the necessary ancillary equipment of manual pilot valve or electro-hydraulic control frame. This filter can guarantee emulsion quality, greatly reduce the faulty rate of hydraulic system and lengthen twice of the lifespan of hydraulic equipment, especially consumable spare parts.

Technical parameters:

Nominal flow:	2000L/min
Working pressure:	31.5MPa
Filtration accuracy:	25、40 μ m
Interface:	KJ31.5D rapid interface dual-loop liquid intake.
	KJ31.5D rapid interface dual-loop liquid intake.
	(Can be customized.)



Safety standard model	A	B	L	L1	Width
VAL-SGFG LZ	KJ31.5D	KJ31.5D	1260	960	470

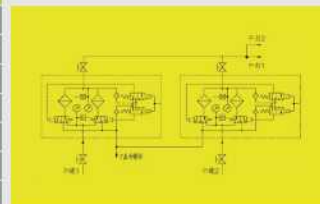


Product Description

This product is mainly used for mining down hole hydraulic frame, as the first class of filtration of pump station, it protects the frame valves. This product is suited for mineral emulsion media, which lowest requirement should meet the MT 76-2002 standards. Under the hydraulic principle, this high pressure filtration station perform high pressure filtration for the emulsion not meeting accuracy requirements, so as to make the emulsion be acceptable, minimize faults and ensure normal operation of equipment. This filtration station uses the micro-computer controller with Chinese language, which collects data of the pressure sensor to complete control logic calculation, and fulfill the auto back wash of high pressure back wash filtration station. This filtration station is mainly used for the fully mechanized mining face hydraulic frame of million and plus tons capacity, and it is the necessary ancillary product for electro-hydraulic control frame or manual pilot valve.

Technical parameters:

Product code:	VALGLZD 2000/31.5/25
Nominal flow:	2000L/min
Working pressure:	31.5MPa
Filtration accuracy:	25 μ m, 40 μ m
Liquid feed method:	DN 31.5 (G) rapid interface dual-loop liquid intake.
	DN 31.5 (G) rapid interface dual-loop liquid intake can be customized.
Rated voltage:	12VDC
Working current:	120/50mA
Static working protection class:	Ip68
Explosion-proof class:	Ex ib I Mb



D FILTRATION SYSTEM



7 BACK TO THE LIQUID FILTRATION STATION

Product Description

Be mainly used for mining down hole hydraulic frame. Filtrate the mining face returned liquid to protect the whole hydraulic system. This product is with reliable sealing, long lifespan, large flow, high accuracy, strong permissible quantity of pollutants, the filtration core can be repeated flushed. The filtration station fully considers the requirements of mining face returned liquid, use two-standby two-design thought, i.e. two filtration cores are working, the other two filtration cores perform replacement and maintenance, without influencing the normal working of mining face.

Technical parameters:

Working flow:	2000L/min
Working pressure:	2MPa
Filtration accuracy:	60 μ m
Dimension:	1090mm (length)
	910mm (width)
	1012mm (height)
Liquid supply mode:	DN 40 rapid interface
	duaHoop liquid intake.
	DN 40 rapid interface
	duaHoop liquid intake.



8 WATER FILTRATION STATION

Product Description

This filtration station filters the mineral atomizing system and emulsion system inlet water, so as to protect the whole hydraulic system. It is suited for mineral clean water working media, which should meet MT 76-2002 standards.

Technical parameters:

Working flow:	2000L/min
Working pressure:	<2.5MPa
Filtration accuracy:	60 μ m
Dimension:	1090mm (length)
	910mm (width)
	1012mm (height)
供液方式:	KJ 31.5 rapid interface liquid intake.
	KJ 31.5 rapid interface liquid intake.
	Can be customized.

