

**ELECTRO-HYDRAULIC
CONTROL VALVE SERIES**

1

**ELECTRO-HYDRAULIC CONTROL
VALVE GROUP**

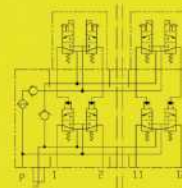
2

**THE THIN SEAM ELECTRO-HYDRAULIC
CONTROL VALVE GROUP****Product Description**

The electro-hydraulic control valve is used for hydraulic bracket electro-hydraulic control system to fulfill the automatic control of hydraulic bracket. It is composed of the hydraulic control main valve and solenoid pilot valve, with compact structure, small volume, tube drawing free design, and easy to maintain. According to the bracket stand column and jacking quantity and control requirements, select the valve core and connector with corresponding quantity and flow. The solenoid valve of this structure is suited for regular and high mining electro-hydraulic control bracket.

Technical parameters:

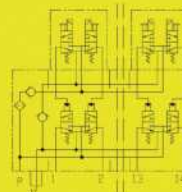
Structure:	Integrated valve, modular structure, inserted valve core
Material:	Stainless material
Nominal pressure:	35MPa
Nominal flow:	125、200、400、500 L/min
Working media:	Emulsion meeting MT 76-2002 standard
Interface:	DN series or KJ series

**Product Description**

The electro-hydraulic control valve is used for hydraulic bracket electro-hydraulic control system to fulfill the automatic control of hydraulic bracket. It is composed of the hydraulic control main valve and solenoid pilot valve, with compact structure, small volume, tube drawing free design, and easy to maintain. According to the bracket stand column and jacking quantity and control requirements, select the valve core and connector with corresponding quantity and flow. The solenoid valve of this structure is suited for regular and high mining electro-hydraulic control bracket.

Technical parameters:

Structure:	Integrated valve, modular structure, inserted valve core
Material:	Stainless material
Nominal pressure:	35MPa
Nominal flow:	125、200、400、500 L/min
Working media:	Emulsion meeting MT 76-2002 standard
Interface:	DN series or KJ series





3

**SOLENOID PILOT
VALVE - A**

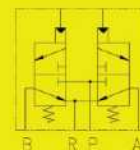
4

**SOLENOID PILOT
VALVE - B****Product Description**

Transferring the electrical control signal into the hydraulic signal, the solenoid pilot valve is composed of one duplex solenoid steel and the dual-valve-core pilot valve. The pilot valve outputs pressure signal to control the switch of hydraulic control main valve core, and the control can also be fulfilled by operating two manual buttons, which are the key elements of electro-hydraulic control system. The valve is with modular structure, smaller volume, stronger anti-pollution ability, reliable performance, low energy consumption and LED indicator; easy to maintenance, low repair costs; good compatibility, can be used by cooperating with the electronic control system and main valve of any domestic or foreign brand. This valve can be used together with the conventional electro-hydraulic control valve, also be used directly as a separate valve.

Technical parameters:

Structure:	Horizontal structure
Material:	Stainless material
Nominal pressure:	35MPa
Nominal flow:	1.2L/min
Rated voltage:	12VDC
Working current:	120/50mA
Working media:	Emulsion meeting
	MT 76-2002 standard
Electrical interface:	Hirschmann interface

**Product Description**

Transferring the electrical control signal into the hydraulic signal, the solenoid pilot valve is composed of one duplex solenoid steel and the dual-valve-core pilot valve. The pilot valve outputs pressure signal to control the switch of hydraulic control main valve core, and the control can also be fulfilled by operating two manual buttons, which are the key elements of electro-hydraulic control system. The valve is with modular structure, smaller volume, stronger anti-pollution ability, reliable performance, low energy consumption and LED indicator; easy to maintenance, low repair costs; good compatibility, can be used by cooperating with the electronic control system and main valve of any domestic or foreign brand. This valve can be used together with the conventional electro-hydraulic control valve, also be used directly as a separate valve.

Technical parameters:

Structure:	Horizontal structure
Material:	Stainless material
Nominal pressure:	35MPa
Nominal flow:	1.2L/min
Rated voltage:	12VDC
Working current:	120/50mA
Working media:	Emulsion meeting
	MT 76-2002 standard
Electrical interface:	Hirschmann interface

